

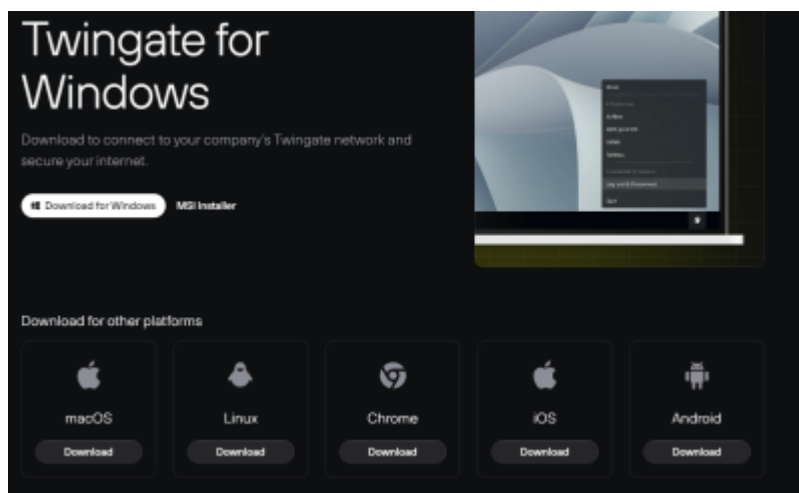
Once you get the invite email from Twingate, go ahead and click on the **Download Twingate** button.



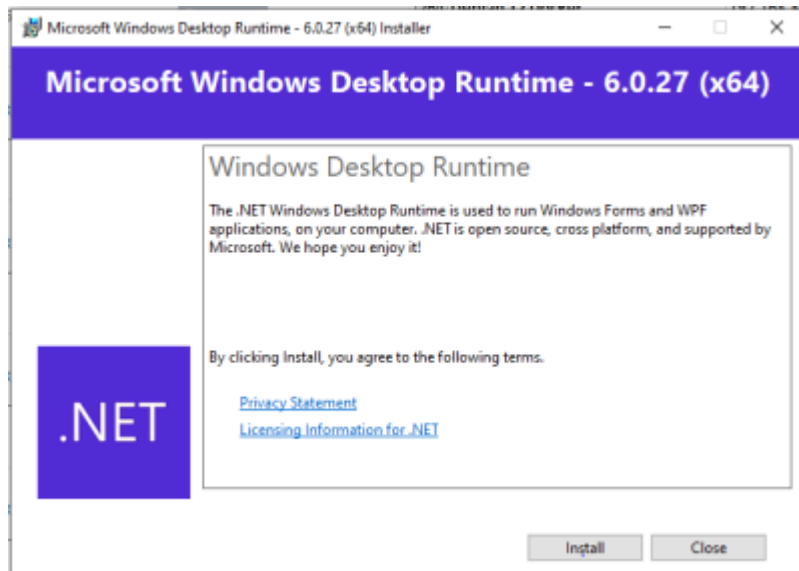
The screenshot shows an email interface with the following elements:

- Header: "Test User invited you to the [redacted] network"
- Text: "Download Twingate and enter your network name"
- Form field: "Network / Organization Name" with a [redacted] input box
- Button: "Download Twingate" (blue)

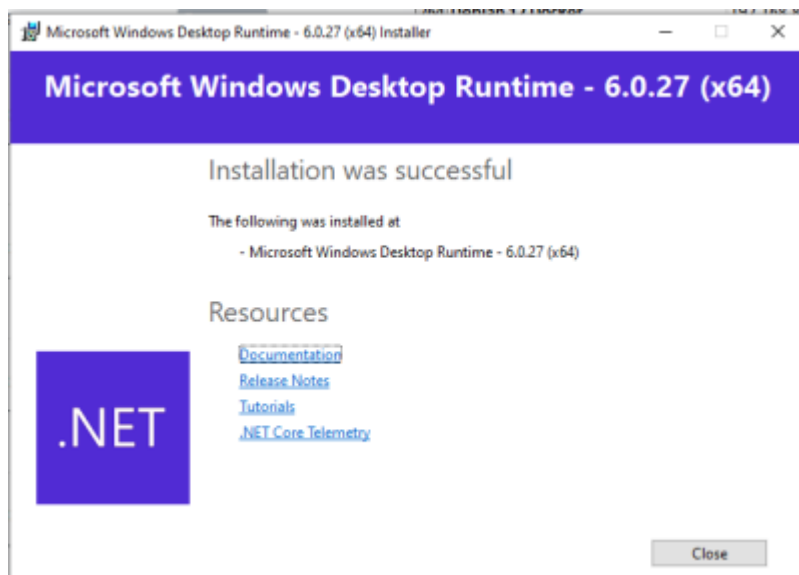
This will take you to Twingate's website where you can select the client you want to download. For most, it will be the default Windows client.



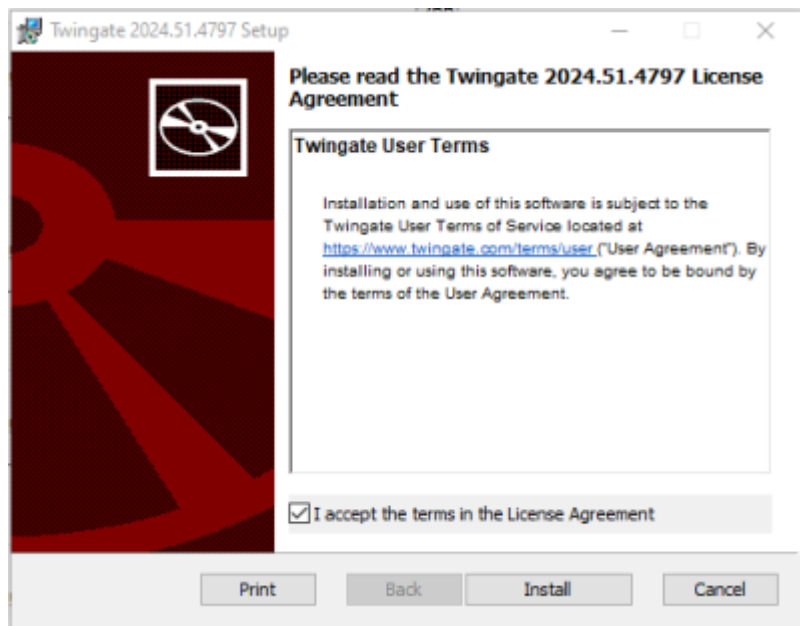
Click the **Download for Windows** button and then run the file that was just downloaded.



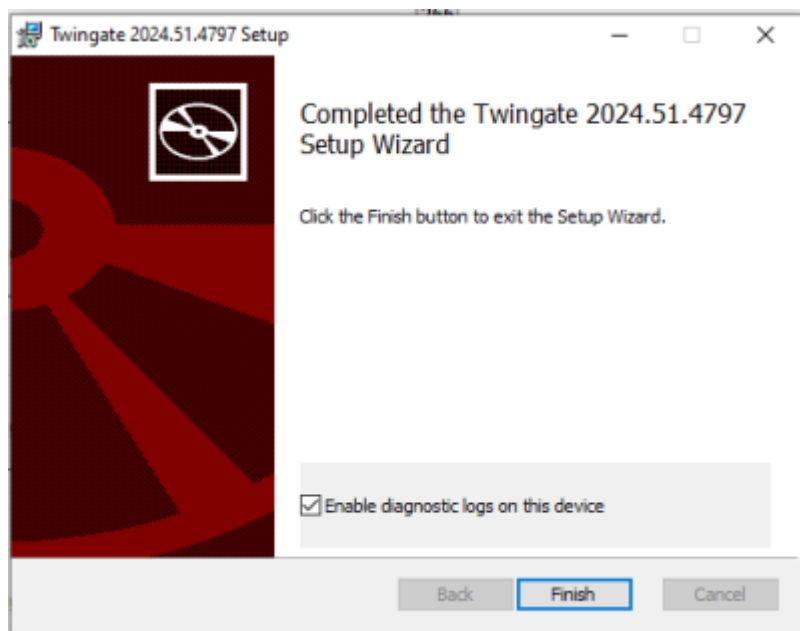
Click the **Install** button to continue.



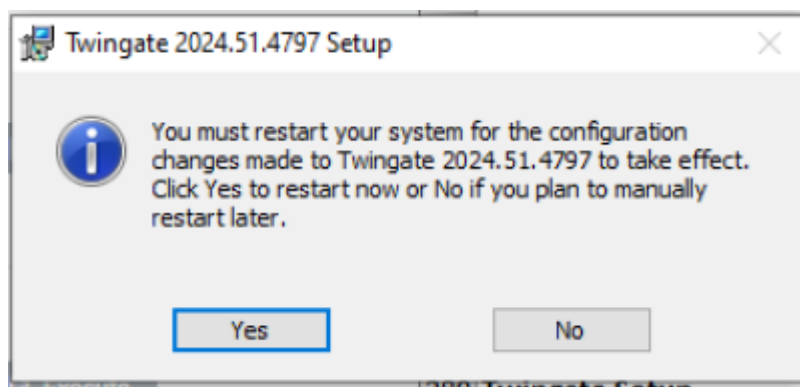
Once .NET has been installed successfully (if needed), click the **Close** button to continue the installation of the Twingate client.



Click the **Install** button to continue.



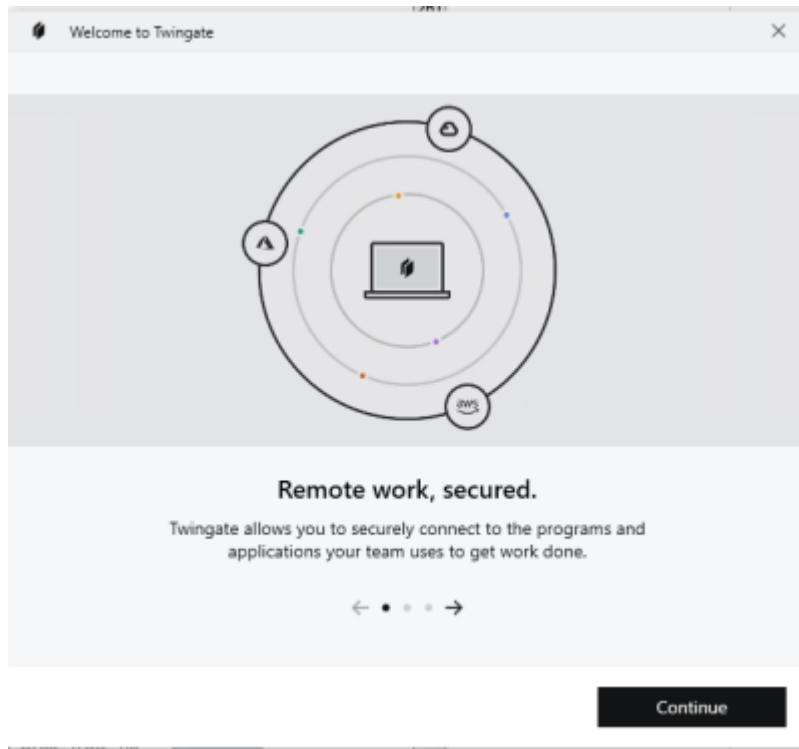
Once the installation has finished, click the **Finish** button to exit.



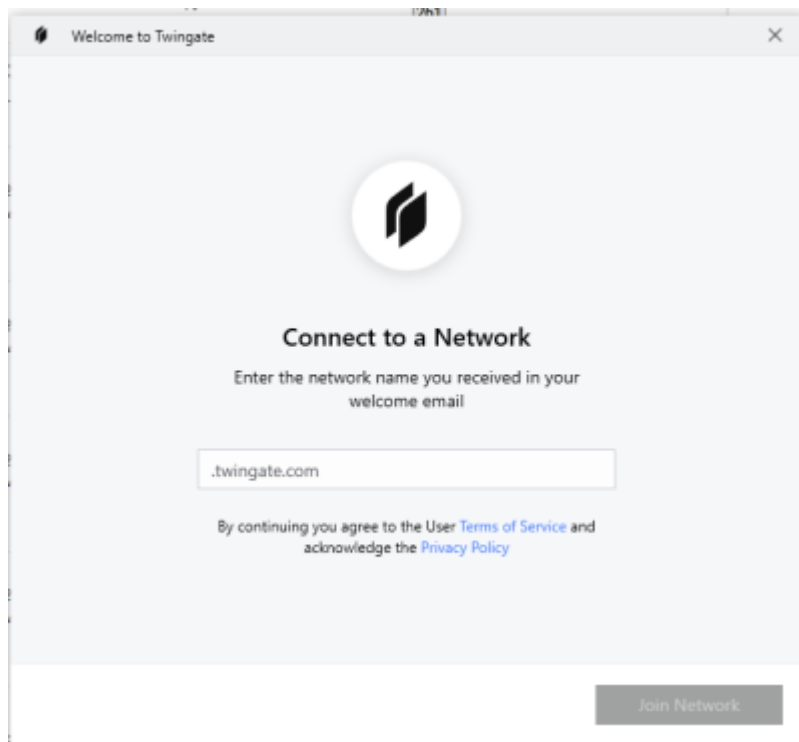
Click the **Yes** button to reboot your computer.

Locate the icon for Twingate after your computer reboots. It should be on your desktop - double click

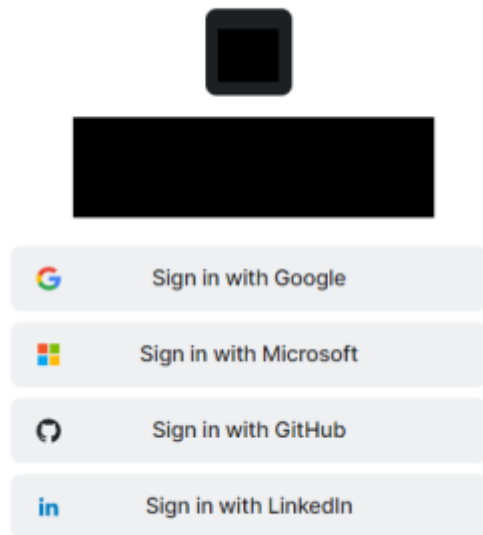
it to start.



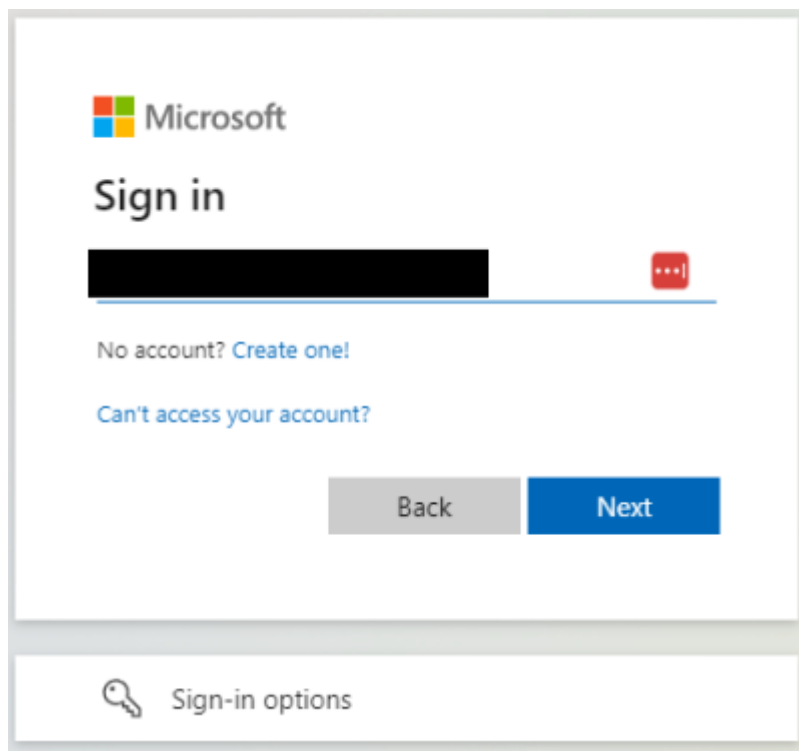
Click the **Continue** button to start the connection.



In the box provided, type in the company name that will have been provided to you and then click the **Join Network** button. You will be asked to authenticate using your Microsoft 365 account.



Click on the **Sign in with Microsoft** button to authenticate using your Microsoft 365 account and MFA.



Once you have authenticated, you will receive an Authenticated screen as shown below.



## Authenticated

You can close this page

You can go ahead and close this web page.

You should now have an icon in your running tasks in the bottom right hand corner of your desktop.

For those of you who work within the Barrie Office, right click on the Twingate icon (it will be in the hidden tasks area), select More and then click on Start at Login so that this isn't running while you are in the office. If you only work remotely from 1 Barrie, you can leave this running all the time.

When you are remote, all you will need to do is to right click on the Twingate icon and select Log into Hayhoehomes.

If you want to close the connection, right click on the Twingate icon and select Log out & disconnect. Each time you connect or start your computer, Twingate will ask you to authenticate using your Microsoft 365 account.

From:

<http://wiki.computersdotcalm.com/> - **ComputersDOTCalm Wiki**

Permanent link:

<http://wiki.computersdotcalm.com/doku.php?id=twingate:setup-account&rev=1713043524>

Last update: **2024/04/13 21:25**

